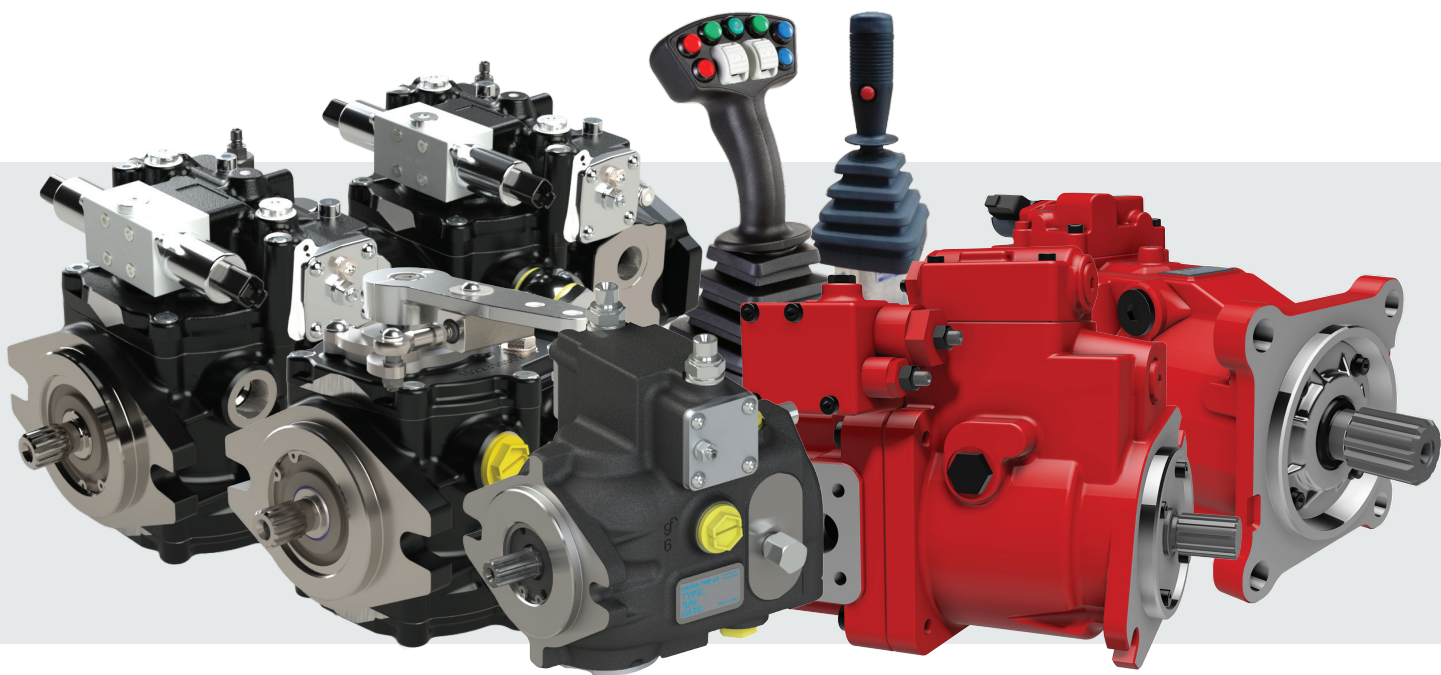




HANSA-TMP



HYDRAULIC COMPONENTS & SYSTEMS

MOBILE APPLICATIONS



CONSTRUCTION



AGRICULTURE



LIFTING



MUNICIPAL

COMPANY PROFILE



Established: 1984

Industry: Hydraulic

Activity: Manufacturing and distribution of hydraulic components and systems

Headquarters: Modena, Italy

Sales Offices: Italy, Germany, China, India

Distribution network: 21 international countries

Certifications: ISO 9001 and ISO 14001

About Us

Hansa TMP S.R.L. is a leading provider of advanced hydraulic solutions for mobile, industrial, marine, and renewable energy applications. We specialize in supporting customers with tailored solutions for hydraulic systems, ensuring optimal performance and efficiency for various machinery and equipment. With a strong commitment to innovation, quality, and customer satisfaction, we have been serving global industries with cutting-edge technologies and customized solutions.

Mission

Our mission is to deliver high-performance and sustainable hydraulic solutions that enhance efficiency, productivity, and reliability in industrial and mobile applications worldwide.

Vision

To be a global leader in hydraulic solutions by continuously advancing technology and exceeding customer expectations.

Core Values

Innovation: Constantly evolving to meet market demands

Quality: Delivering excellence through precision engineering

Customer Focus: Providing tailored solutions to meet unique needs

Sustainability: Promoting environmentally responsible practices

PRODUCTS & SERVICES

Hansa TMP specializes in high-quality hydraulic pumps, motors, valves, and electronic control systems.

Our product portfolio includes:

Hydraulic Components

- Axial piston pumps & motors
- Gear pumps & motors
- Pump drives & gear boxes
- Hydraulic valves & controls
- Hydrostatic transmission solutions for mobile applications

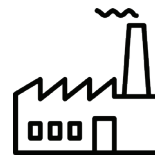
Services & Support

- Engineering consultation
- Customization & prototyping
- After-sales support & maintenance
- Specialized support for hydrostatic transmission systems

Industry Applications



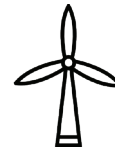
MOBILE



INDUSTRIAL



MARINE



WIND-RENEWABLE ENERGY

Clients & Partnerships

We have proudly partnered with leading OEMs of mobile and industrial applications worldwide, delivering innovative and efficient solutions tailored to their needs. Our commitment to long-term relationships and customer success sets us apart.

Contact Information

Headquarters: Via Martin Luther King, 6, 41122 Modena MO - Italy

Phone: +39 059 415711

Email: hansatmp@hansatmp.it

Website: www.hansatmp.com

Follow us :



HANSA-TMP S.r.l.



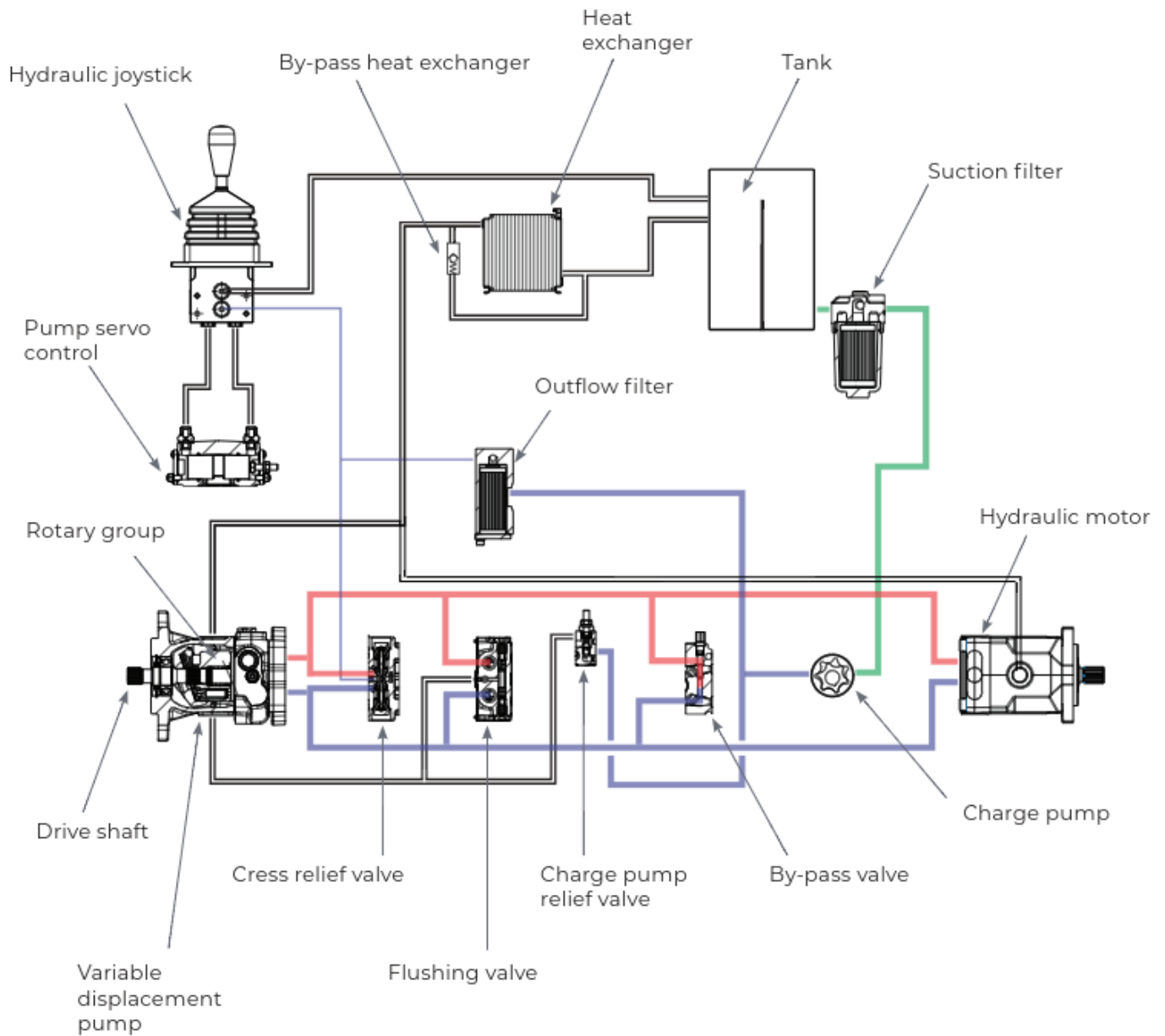
@hansa-tmp834

CERTIFIED COMPANY



ISO 9001:2015 | ISO 14001:2015

COMPLETE SYSTEM FOR HYDROSTATIC TRANSMISSION



Color legend

■ Low pressure line and pilot

■ High pressure line

■ Suction

□ Return

HANSA TMP MANUFACTURING & ENGINEERING	6
VARIABLE DISPLACEMENT AXIAL PISTON PUMPS FOR CLOSED LOOP	6
PUMP'S CONNECTIONS	8
AXIAL PISTON MOTORS	10
RADIAL PISTON MOTORS	11
ORBIT MOTORS	13
BENT AXIS PUMPS AND MOTORS	14
HAND PUMPS	15
FLOW DIVIDERS	16
FAN DRIVE	17
FILTERS	18
HEAT EXCHANGERS	19
JOYSTICKS AND PEDALS	20
ROTARY COUPLINGS	21
HOSE AND CABLE REELS	22
DISTRIBUTED BRANDS	23
KAWASAKI - AXIAL PISTON PUMPS, AXIAL PISTON MOTORS	24
WALVOIL / HYDROCONTROL – GEAR PUMPS AND MOTORS, DIRECTIONAL CONTROL VALVES	26
YOSHE – AXIAL PISTON PUMPS	28
BONFIGLIOLI - GEARBOXES	29
HKS – ROTARY ACTUATORS	30

VARIABLE DISPLACEMENT AXIAL PISTON PUMP

FOR CLOSED LOOP SYSTEM

MODEL		DISPLACEMENT (CM ³ /N)	PEAK PRESSURE (BAR)	MAX. SPEED (RPM)
TPV 1100 (single)		6 ÷ 21	350	3.900
TPVT 1300 (compact tandem)		6 ÷ 21	350	3.900
TPV 1500 (single)		17 ÷ 24	350	3.600
TPV 1500 (compact tandem)		17 ÷ 24	350	3.600
TPV 3600 MD (single & multiple)		26 ÷ 43	350	3.600
TPV 3800 (single & multiple)		26 ÷ 43	450	3.800
TPV 4300 (single & multiple)		32 ÷ 50	320	3.900

CONTROLS

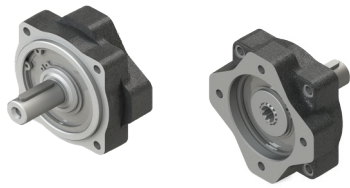
PUMP CONTROLS	TPV110/ TPVT1300 BTB	TPV 1500/ TPVTC1500	TPV 3600 MD	TPV 3800	TPV 4300/ TPVT 4300
Direct Mechanical with / without lever	•				
Mechanical control lever with return to zero position	•				
Hydraulic servo control	•	•	•	•	•
Electro-proportional servo control 12V DC / 24V DC (AMP junior timer connector/Deutsch)	•	•	•	•	•
On-Off Electric servo control 12V DC / 24V DC – Open / Closed center - (AMP junior timer connector/Deutsch)	•	•	•	•	•
Hydraulic servo control with feed back		•	•	•	•
Mechanical lever servo control with feed back		•	•	•	•
Electro-proportional servo control 12V DC / 24V DC (AMP junior timer connector/Deutsch) with feedback		•	•	•	•
On-Off Electric servo control 12V DC / 24V DC – Open / Closed center - (AMP junior timer connector/Deutsch) with feedback		•	•	•	•
Hydraulic Automotive Control		•	•	•	•
Electric Automotive Control		•	•	•	•

OPTIONS

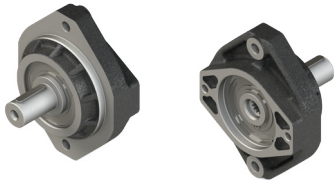
PUMP OPTIONS	TPV110/ TPVT1300 BTB	TPV 1500/ TPVTC1500	TPV 3600 MD	TPV 3800	TPV 4300/ TPVT 4300
Flushing Valve	•	•	•	•	•
By-pass	•	•	•	•	•
Angle Sensor		•	•	•	
Speed Sensor		•	•	•	
Pressure Sensor		•	•	•	
Pressure Cut-off		•	•	•	•
Pre-arranged for connection with external filter		•	•	•	•
On-Board Pressure Filter			•	•	
Man on Board	•	•	•	•	•

PUMPS CONNECTIONS

BELT DRIVE SUPPORT



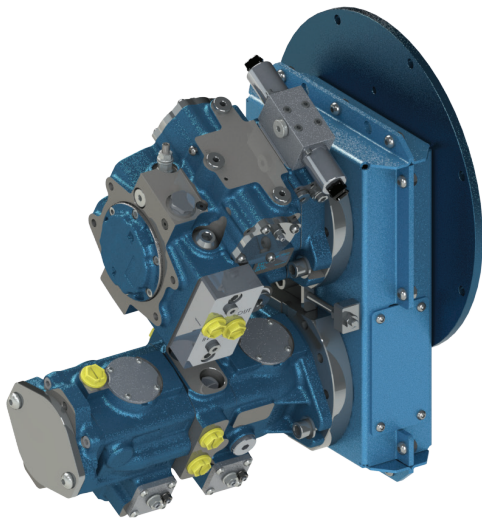
SAE-A



SAE-B

BDS 24	BDS 35	FEATURES
ø24, 9 shaft	ø35, 13 shaft	<ul style="list-style-type: none"> • SAE-A BDS 24/9 & 24/13 • SAE-B BDS 35/13 & 35/15 • High radial load capacity • Long lifetime • Suitable for high-speed engines. Up to 3600 rpm • Maintenance free
ø24, 13 shaft	ø35, 15 shaft	

SPLIT BOX

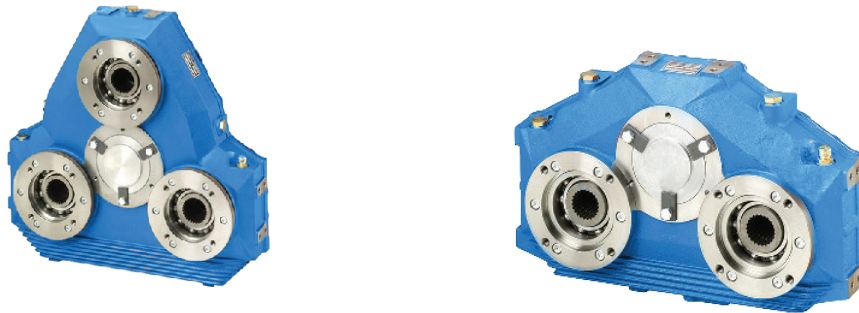


GENERAL INFORMATION	
MAX INPUT SPEED (RPM)	3500
MAX INPUT TORQUE (Nm)	500
MAX INPUT POWER (KW)	180
WORKING TEMPERATURE (°C)	-20 / +100
DIRECT PTO "A" with HEAT ENGINE	
(Nm)	500
TOTAL MAX TORQUE RELATIVE (Nm)	358
MOTION SOCKET "B" connected to the belt	
COUPLE MAX (Nm)	142

FEATURES:

- Press formed sheet metal housing
- Arrangements for SAE A and SAE B
- Prepared to be applied on heat engine with SAE B interface + adapter bell.
- Compactness

MULTIPLE PUMP DRIVES



FEATURES:

- Cast-Iron casing
- With housing and coupling connection for diesel engines
- Adaptors for different pumps
- Viton seals on input shaft

MODEL	MAX. INPUT POWER (KW)	MAX. INPUT TORQUE (NM)	MAX. INPUT SPEED (N/MIN)	GEAR RATIO 1: ...
TWO PUMPS DRIVE				
AM 110	180	735 - 450	2.400 - 3.950	0,49 - 1,50
AM 216	205	800 - 500	2.400 - 3.950	0,50 - 1,47
AM 220	355	1.470 - 900	2.400 - 3.950	0,49 - 1,50
AM 230	430	2.080 - 1.270	1.950 - 3.200	0,51 - 1,48
AM 232	656	3.250 - 2.300	1.750 - 2.400	0,49 - 1,00
AM 270	700	4.400 - 2.570	1.800 - 2.600	0,70 - 1,43
THREE PUMPS DRIVE				
AM 320	205	735 - 500	2.650 - 3.950	0,68 - 1,47
AM 330	355	1.470 - 900	2.400 - 3.950	0,49 - 1,50
AM 345	430	2.080 - 1.270	1.950 - 3.200	0,51 - 1,48
AM 365	670	3.480 - 2.350	1.800 - 2.500	0,69 - 1,45
AM 370	700	4.400 - 2.570	1.800 - 2.600	0,70 - 1,43
FOUR PUMPS DRIVE				
AM 450	640	4.200 - 2.600	1.800 - 2.400	0,50 - 1,00
AM 480	700	4.400 - 3.490	1.700 - 2.000	0,72 - 1,15
AM 481	850	5.500	1.700 - 2.000	0,72 - 1,15

AXIAL PISTON MOTORS

FIX DISPLACEMENT



TMF SERIES

MODEL	DISPLACEMENT (CM ³ /N)	PEAK PRESSURE (MPA)	MAX. SPEED (N/MIN)	CHARACTERISTICS
TMF 600 (medium duty)	22 ÷ 100	42	4.200	<ul style="list-style-type: none"> • Plug-in mounting • Heavy duty bearings for long service life • High permissible output speed

AXIAL PISTON MOTORS

DUAL OR VARIABLE DISPLACEMENT



TMV SERIES

MODEL	DISPLACEMENT (CM ³ /N)	PEAK PRESSURE (MPA)	MAX. SPEED (N/MIN)	CHARACTERISTICS
TMV 660 (plug-in)	Max 25 ÷ 45 Min 12 ÷ 22	41	5200	<ul style="list-style-type: none"> • Plug-in mounting • Heavy duty bearings for long service life • High permissible output speed



MODEL	DISPLACEMENT (CM ³ /N)	PEAK PRESSURE (MPA)	MAX. SPEED (N/MIN)	CHARACTERISTICS
TMV 560	Max 35 ÷ 40 Min 17 ÷ 20	41	5200	<ul style="list-style-type: none"> • Excellent weight/power ratio • Excellent volumetric and mechanical efficiency • Compact design

RADIAL PISTON MOTORS

SINGLE & DUAL DISPLACEMENT

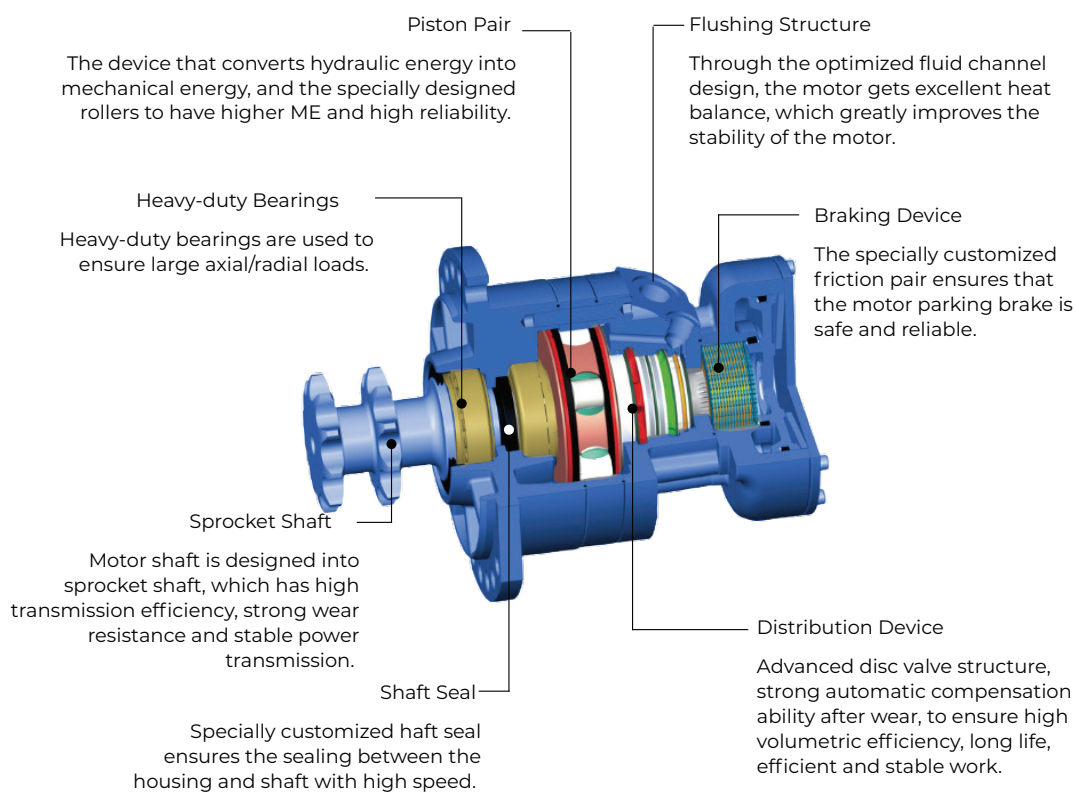
TMR 03

SINGLE & DUAL DISPLACEMENT



MAX. DISPLACEMENT (CM ³ /N)	RATED PRESSURE (BAR)	PEAK PRESSURE (BAR)	MAX. SPEED (N/ MIN)	PEAK POWER (KW)
225	250	400	475	22
225			420	22
400			270	22

INTERNAL STRUCTURE



RADIAL PISTON MOTORS

FIXED DISPLACEMENT HIGH TORQUE



GM SERIES

MODEL	DISPLACEMENT (CM ₃ /N)	TORQUE (NM/MPA)	RATED PRESSURE (MPA)	MAX. SPEED (N/ MIN)	MAX. POWER (KW)
GM 05	39 ÷ 191	0,062 - 0,304	25	1.000	33
GM 1	99 ÷ 314	0,154 - 0,49	25	1.000	48
GM 2	192 ÷ 623	0,3 - 0,973	25	800	90
GM 3	352 ÷ 987	0,549 - 1,54	25	700	80
GM 4	402 ÷ 1316	0,627 - 2,05	25	600	100
GM 5A	807 ÷ 2007	1,26 - 3,13	25	450	120
GM 6	1690 ÷ 3041	2,64 - 4,75	25	400	170
GM 7	1373 ÷ 4663	2,19 - 7,42	25	400	250



BD SERIES

MODEL	DISPLACEMENT (CM ₃ /N)	RATED PRES- SURE (MPA)	MAX. PRESSURE (MPA)	CONTINUOUS SPEED (N/MIN)	MAX. POWER (KW)
BD 1	45 ÷ 250	30	40	500 / 1.500	55 / 42
BD 2	90 ÷ 500	25	37,5	700 / 1.500	75 / 65
BD 3	130 ÷ 900	25	40	360 / 1.600	95 / 85
BD 5	250 ÷ 1.900	25	42,5	700 / 1.400	170 / 150
BD 6	420 ÷ 3.000	25	45	300 / 625	240 / 200

SPOOL VALVE ORBIT MOTORS



MOTOR MODEL	DISPLACEMENT (CM ₃ /N)	RATED PRESSURE (MPA)	MAX. PRESSURE (MPA)	TORQUE (NM)
OTMM	8 - 50	10	20	11 - 46
OTMR	51 - 402	14	20	93 - 380
OTS	52 - 402	14	20	93 - 540
OTMH	203 - 472	16	22	425 - 720
OTMP	52 - 393	14	22	97 - 416
OTH	49 - 383	10,5	18	65 - 335
OTMPH	49 - 383	14	20	90 - 350

DISC VALVE ORBIT MOTORS



MOTOR MODEL	DISPLACEMENT (CM ₃ /N)	RATED PRESSURE (MPA)	MAX. PRESSURE (MPA)	TORQUE (NM)
OTM3Y	80 - 476	20,5	29,5	226 - 728
OTM4	158 - 535	20	28	450 - 1121
OTM5	314 - 969	20	28	873 - 1900
OTM6	759 - 1186	16	21	1690 - 2650

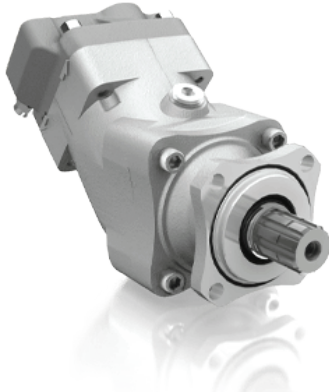
ORBIT MOTORS WITH BRAKE



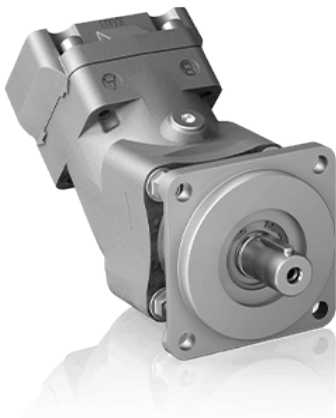
MOTOR MODEL	DISPLACEMENT (CM ₃ /N)	RATED PRESSURE (MPA)	MAX. PRESSURE (MPA)	TORQUE (NM)
ZOTMR	80 - 321	9	14	152 - 380
ZOTMR/N	80 - 401	9	14	152 - 380
OTM5	80 - 1186	12,5	16	156 - 2250

BENT AXIS PUMPS AND MOTORS

BENT AXIS PUMPS



MODEL	DISPLACEMENT (CM ³ /N)	PEAK PRESSURE (MPA)	MAX. SPEED (N/MIN)	CHARACTERISTICS
TPB - TAP 70	12 ÷ 130	40	3.300	<ul style="list-style-type: none">• Available with ISO, SAE and DIN standard mounting• High efficiency over the entire speed range• Dual displacement pump available for parallel working operation



BENT AXIS MOTORS

MODEL	DISPLACEMENT (CM ³ /N)	PEAK PRESSURE (MPA)	MAX. SPEED (N/MIN)	CHARACTERISTICS
TMB 700	12,6 ÷ 130	40	7.500	<ul style="list-style-type: none">• Available with ISO, SAE and DIN standard mounting• High speed and high efficiency motors• Smooth operation over the entire speed range

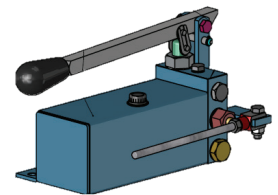
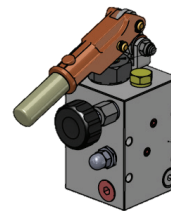


HAND PUMPS FOR SINGLE ACTING CYLINDER

SINGLE ACTING HAND PUMP
DOUBLE ACTING HAND PUMP
FOOT-OPERATED

OPTIONS:

- Single pump
- With drain
- With tank and drain

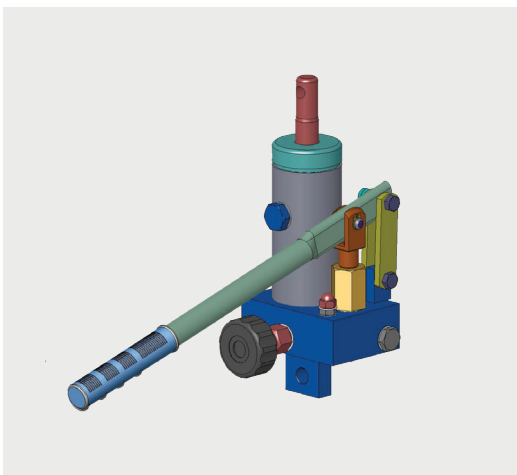


HAND PUMPS FOR DOUBLE ACTING CYLINDER

SINGLE ACTING HAND PUMP
DOUBLE ACTING HAND PUMP
FOOT-OPERATED

OPTIONS:

- Single pump
- With tank



HAND PUMPS WITH BUILD-IN CYLINDER

SINGLE ACTING HAND PUMP
DOUBLE ACTING HAND PUMP

OPTIONS:

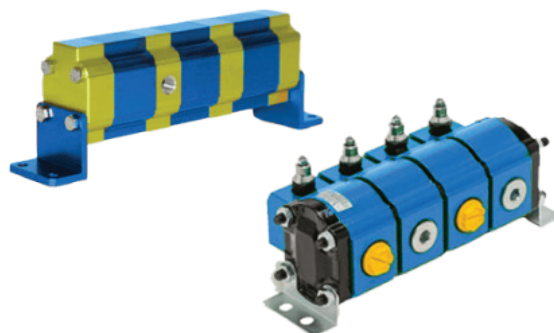
- Single pump
- With tank



We can provide different types of hand pumps according to customer requirements.

GEAR FLOW DIVIDERS

0-1-2-3 GROUP



MODEL	DISPLACE- MENT	MAX. PRESSURE	ONE ELEMENT FLOW RATE (L/MIN)	
	CM ₃ /N	MPA	MIN.	MAX.
GROUP 0	0,17 ÷ 2,3	21	0,2	10,3
GROUP 1	0,9 ÷ 9,8	22	1	41
GROUP 2	4 ÷ 40	21	4,8	100
GROUP 3	15 ÷ 90	30	18	180

OPTIONAL:

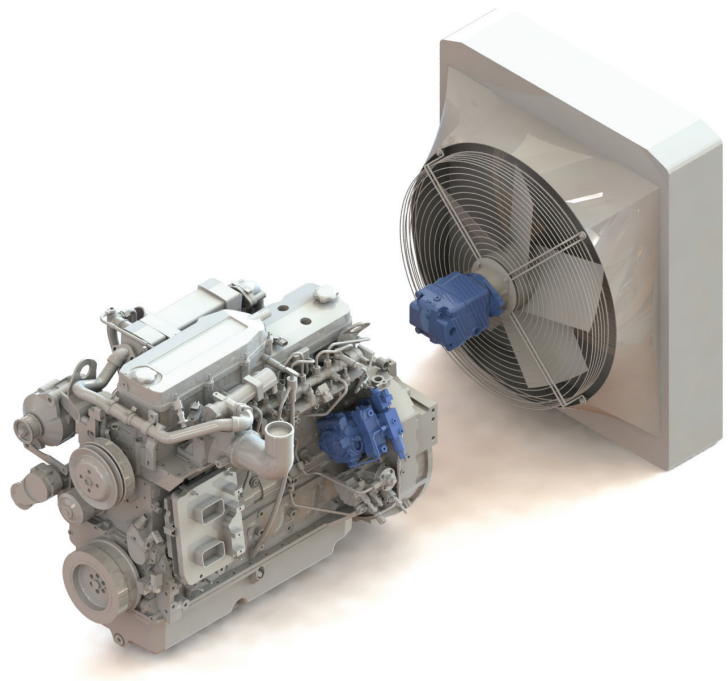
- Max pressure valve
- External drain
- Pressure gauge mounting
- Anti-cavitation valve block
- Solenoid valve

FEATURES:

- Multi-section gear flow divider
- Precision $\pm 1,5\%$ up to $2,5\%$
- Peak pressure 20% higher than maximum continuous operating pressure

FAN DRIVE SYSTEM IN CLOSED LOOP SYSTEM

TPV SERIES



FIXED DISPLACEMENT AXIAL PISTON MOTORS TMF SERIES

- STD: Standard
- SL: Speed Limiter
- RF: Reverse Flow
- TOP Version: Speed Limiter + Reverse Flow

BENEFIT

- . LOWER dimension of the oil tank
- . HIGH SPEED rotation
- . Complete CONTROL of the propeller working conditions
- . NO risk of CAVITATION during the fan stop
- . INVERSION OF ROTATION by the pump displacement control

FILTERS

RETURN FILTERS - FR532



TECHNICAL FEATURES

- Tank top filters to protect the circuit return line flows
- 360° adjustable connection
- “AF” microfiber and conductive plastics media to minimize the risk of electric discharges inside the element
- Wide range of accessories and clogging indicators

MAX FLOW 55L/min
FILTERING UP TO 10 µm

FR690- MEDIUM AND HIGH PRESSURE FILTERS

TECHNICAL FEATURES

- Lightweight medium pressure filter
- Different mounting options
- Visual and electrical differential indicators available

MAX FLOW UP TO 85L/min
MAX PRESSURE 150 Bar
FILTERING UP TO 3 µm



FR 620 / FR 625 SERIES

SUCTION AND RETURN IN LINE SPIN-ON FILTERS

TECHNICAL FEATURES

- FR 620 filter series are directly connected to the suction line or return line of hydraulic circuit.
- FR 625 filter series can be used in applications with 363 psi (25bar) working pressure.
- Both series safeguard the hydraulic circuit from contaminating particles.

MAX FLOW UP TO 350L/min
MAX PRESSURE 25 Bar
FILTERING UP TO 10 µm



AIR-OIL HEAT EXCHANGER

MG AIR SERIES | HPA SERIES



FEATURES:

- High efficiency
- Wide range of applications
- Easy maintenance

EXCHANGER MODEL	RATED FLOW IT/MIN	MAX WORKING PRESSURE (BAR)	CAPACITY KW/°C
Air - Oil	5 - 520	20	0.49 - 1,50
Electric ventilation	Single phase V AC - 50 HZ - Three phase 230 - 400 V AC 50 - 60 Hz		
Hydraulic ventilation	Motor Gr. 1 - 2 - 3		
Standard Equipment	Fixed thermostat - Support feet		
Water - Oil	5 - 800	12	up to 8,30
Standard Equipment	Fixed tube - Extensible tube bundle - Immersed tube bundle		
Materials	Copper brass AISI 304 - Cu Ni 10 - Carbon steel		

JOYSTICK & PEDAL



FEATURES:

- Single or dual axis heavy duty lever
- Contactless hall sensor technology
- Strong and reliable mechanics
- Digital programmable microprocessor
- Protection up to IP68
- Supply range 11-32 VDC
- EMC/Automotive compliant
- Parameter setup with PC software and serial cable
- Available with a wide range of handles or knobs

MODEL	AXIS	HANDLES OPT.	PORTS
Pilot Operation CPVL106	Dual axis	Knob, Straight lever, MFE	6
Pilot Operation HPV1	Dual axis	Knob, Straight lever, MFE	4
Pilot Operation HPV2	Dual axis	Knob, Straight lever, MFE, MFE2 and EXM	4
Pilot Operation HPVB, HPVE	Single axis	Knob	2-4
Pilot Operation HPVL, SPVL	Dual axis	Knob, Straight lever, MFE	4-6
Pilot Operation HPVM	Single axis	Knob, Straight lever	4-2

HYDRAULIC ROTARY COUPLINGS



MODEL	PORTS	FLUIDS	MAX. PRESSURE (MPa)	ROTATION SPEED (RPM)	OPERATING TEMPERATURE*
DA SERIES	2 to 8	hydraulic fluid, air	420 bar	0 - 12 rpm	-30 to 80°C
DI SERIES	2 to 18	hydraulic fluid, air	420 bar	0 - 12 rpm	-30 to 80°C
DIF SERIES	6 to 22	hydraulic fluid, air	420 bar	0 - 12 rpm	-30 to 80°C
DPC SERIES	2 to 18	hydraulic fluid, air	420 bar	0 - 12 rpm	-30 to 80°C
DM SERIES	7 to 11	hydraulic fluid, air	420 bar	0 - 12 rpm	-30 to 80°C

ELECTRIC SLIP RINGS



MODEL	ROTATION SPEED	OPERATING TEMPERATURE	NUMBER OF CONTACTS	CURRENT LOAD	OPERATING VOLTAGE	PROTECTION RATING (CE163)
CE SERIES	0 - 20 rpm	-20 to 60°C	1 to 80	0.1 mA to 50 A	680 V AC / 220 V DC	IP65
HiPO SERIES	0 - 30 rpm	-40 to 60°C	50	10 mA to 300 A	700 V AC / 700 V DC	IP67

ATEX CERTIFIED PRODUCTS



SWIVEL JOINTS



FLUIDS	MAX. PRESSURE	WORKING PRESSURE	ROTATION SPEED	OPERATING TEMPERATURE
mineral oil	450 bar	up to 450 bar	0 - 15 rpm	-50 to 60°C

ELECTRIC SLIP RING - ATEX

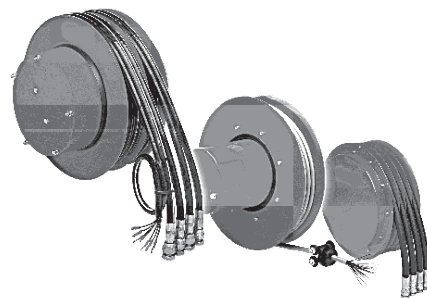


FLUIDS	MAX. PRESSURE	WORKING PRESSURE	ROTATION SPEED	OPERATING TEMPERATURE
mineral oil	450 bar	up to 450 bar	0 - 15 rpm	-50 to 60°C

HOSE AND CABLE REELS

FEATURES:

- High technical performances
- Large applications range
- Pressure up to 30 MPa
- Double sealing system



HOSE REELS

MODEL	NUMBER OF HOSE PORT	HOSE TYPE	NOMINAL DIAMETER MM.	PORT DIMENSIONS BSP	MAX. PRESSURE MPA
S1	1	1 x single hose	295 - 720	5/16" - 1/2" - 5/8" - 3/4" - 1"	35
A1 25....800 - 1600			810 - 1600	1/2" - 5/8" - 3/4" - 1"	35
AG....200 - 340 Compact	2	1 x twin hose	200 - 340	3/16" - 1/4" - 5/16" - 3/8"	30
AG....296 - 520			296 - 520	1/4" - 5/16" - 3/8" - 1/2"	30
AG....570 - 1000			570 - 1000	1/4" - 5/16" - 3/8" - 1/2"	30
AG 19			420 - 920	1/2" - 5/8" - 3/4"	35
AG 25			810 - 1400	3/8"-1/2" - 5/8" - 3/4"	35
AG LS			400 - 820	1/4" - 5/16" - 3/8"	30
RT 1 - RT 2		Rescue Tools Hose Reel	420 - 520	1/4"	37/70
A2.19		2 x single hose	420 - 820	1/2" - 5/8" - 3/4"	35
A2.25			620 - 1400	1/2" - 5/8" - 3/4" - 1"	35
A3	3	1 x 3 port hose	295 - 920	1/4" - 5/16" - 3/8" - 1/2"	30
A3.19		3 x single hose	420 - 820	1/2" - 5/8" - 3/4"	30
A4	4	2 x twin hose	230 - 820	1/4" - 5/16" - 3/8"	30
A4.12			295 - 820	1/2"	30
M4			370 - 720	1/4" - 5/16" - 3/8" - 1/2"	30
A4.19		4 x single hose	420 - 820	1/2" - 5/8" - 3/4"	35
A 5	5	Multi hose	295 - 720	1/4" - 5/16" - 3/8"	30
A 6	6		295 - 720	1/4" - 5/16" - 3/8"	30
AG/E	2	2 hoses + cable	275 - 700	3/8" - 1/2"	30
A3/E	3	3 hoses + cable	295 - 470	3/8"	30
A4/E	4	4 hoses + cable	295 - 478	3/8"	30
A5/E	5	5 hoses + cable	295 - 478	3/8"	30
9000	1	Air, Oil, Diesel, Water	440	1/4" - 5/16" - 3/8" - 1/2"	40
9100	1	Air, Oil, Diesel, Water	450	1/4" - 5/16" - 3/8" - 1/2"	40/25/8
800	1	Compressed Air	-	-	1,0 - 1,5
9200	1	Welding Gas	-	-	2

CABLE REELS

MODEL	NOMINAL DIAMETER MM.	CONDUCTOR SECTION	NUMBER OF CONTACTS	CURRENT
CR 025	120	0,25 mm ²	2 - 3	75 V - 4 A
CR 10	235 - 650	1 mm ²	2 - 36	75 V - 4 A
CR 15	235 - 570	1,5 mm ²	2 - 36	75 V - 6 A
CR 25	295 - 820	2,5 mm ²	3 - 12	75 V - 15 A
6000	370 - 720	Up to 2,5 mm ²	3 - 24	400 V - 150 A
700	-	Manual operation	5	12 - 24 230 - 380



DISTRIBUTED BRANDS :



Kawasaki manufactures a wide range of piston pumps and motors, for both open and closed circuit applications. Around the world, in virtually every area of construction, marine and manufacturing industry, Kawasaki pumps and motors provide cost effective and reliable solutions.



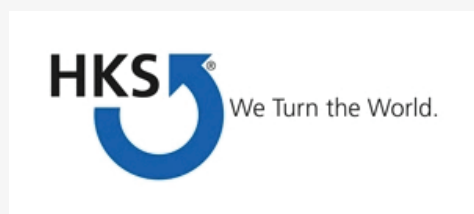
Walvoil offers a wide range of hydraulic valves, pumps, motors, and electronic systems. Across various industries, its innovative solutions ensure efficiency, reliability, and high performance. Integrating the expertise of Walvoil, Hydrocontrol, and Galtech, its products serve a wide array of industries, from construction and agriculture to industrial applications.



Bonfiglioli designs and manufactures a wide range of gearmotors, drive systems, and planetary gearboxes. Across industries such as construction, agriculture, and logistics, Bonfiglioli solutions deliver efficiency, reliability, and innovation.



Yoeshe manufactures a wide range of hydraulic pumps and motors for diverse applications. With a focus on performance and durability, Yoeshe solutions ensure efficiency and reliability across industries.



HKS designs and manufactures a wide range of double-acting and spring return/failsafe actuators. Pressure rating up to 350 bar torque up to 350,000Nm. Wide capabilities and applications. ATEX, DIN and SIL certification and standards.


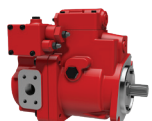

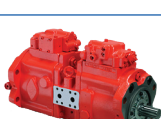
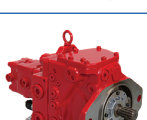
AUTHORIZED. TRUSTED. GUARANTEED.

VARIABLE DISPLACEMENT AXIAL PISTON PUMP


FOR OPEN LOOP SYSTEM



KAWASAKI COOPERATION WITH HANSA-TMP SINCE 1997.

MODEL		DISPLACEMENT (CM ³ /N)	PEAK PRESSURE (MPA)	CONTROL TYPE
K3VLS Series		50 ÷ 150	35	<ul style="list-style-type: none">• Load Sensing• Pressure Compensating• Electric Flow Control
K3VL Series		28 ÷ 200	35	<ul style="list-style-type: none">• Load Sensing• Pressure Compensating• Horse Power Control
K7V Series		65 ÷ 140	40	<ul style="list-style-type: none">• Electric Flow Control• Hydraulic Pilot Flow Control• Horse Power Control
K3V / K5V Series		63 ÷ 280	39,2	<ul style="list-style-type: none">• Electric Flow Control• Hydraulic Pilot Flow Control• Horse Power Control
K7SP Series		36 x 2	32	<ul style="list-style-type: none">• Horse Power Control

AXIAL PISTON MOTORS

MODEL		DISPLACEMENT (CM ³ /N)	OUTPUT TORQUE (NM)	SPEED (MIN-1)
M7V/M7VC/M7X Series		85 ÷ 212	541 - 1437	4500 - 2900 (at max displacement)

FAN DRIVE SYSTEM IN OPEN LOOP SYSTEM



K3VL28 (FAN DRIVE) - MEDIUM PRESSURE, SWASH PLATE, OPEN LOOP AXIAL PISTON PUMPS

The K3VL pump 28 Fan Drive is variable displacement axial piston pump with a proportional electric controller which can be operated either by the Diesel engine control unit or by the machine control unit. In this way, the cooling air flow is optimized with the temperature of the combustion engine reducing the noise and increasing the efficiency of the system.



HANSA-TMP

For



Kawasaki

CERTIFICATES FOR REPAIR, MAINTENANCE AND SERVICE



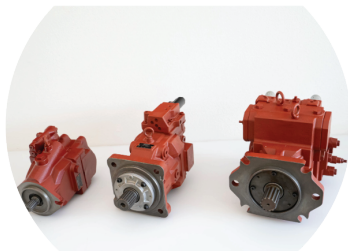
AUTHORIZED KAWASAKI CENTER

Hansa TMP is a certified Authorized Kawasaki Center, specializing in repairs, maintenance, and services for Kawasaki components. We offer comprehensive assistance with highly skilled technicians ready to address any needs. Additionally, we provide on-site support with our expert team, ensuring timely and accurate solutions for the optimal performance of your machines.



CERTIFIED TEST BENCHES

Hansa TMP offers advanced test benches for quality and performance testing, as well as component customizations to optimize your machines. Our staff is directly trained by Kawasaki through continuous training programs, ensuring that our technicians are qualified and up to date with the latest industry standards.



STOCK AVAILABILITY

Hansa TMP has an extensive inventory of original spare parts and complete units, always ready to meet your needs. With a focus on efficiency, we guarantee short delivery times to ensure your operations run smoothly and without interruption.

Most common pumps on excavators:

K3V112 DT(P)
K3V280DTH (SH)
KSV 140DT (P)

Excavator brands that we can service:

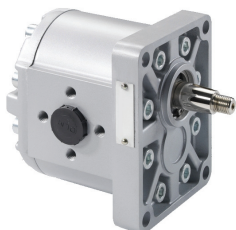


TAKEUCHI

HITACHI
Inspire the Next

DOOSAN

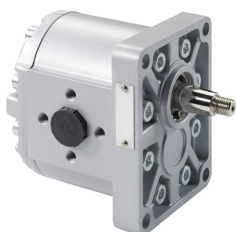
GEAR PUMPS AND MOTORS



HYDRAULIC GEAR MOTORS 0-1-2-3 GROUP

- High efficiency
- European standard, German standard, SAE flange, etc.
- Aluminium and cast iron flanges

GROUP	DISPLACEMENT (CM ³ /N)	MAX. CONTINUOUS PRESSURE (MPA)	MAX. SPEED (N/MIN)
0	0,16 ÷ 2,28	22	9.000/5000
1	0,89 ÷ 9,78	24	6.000/2000
2	4,00 ÷ 31,50	25	4.000/2200
3	19,30 ÷ 77,20	25	3.500/2200

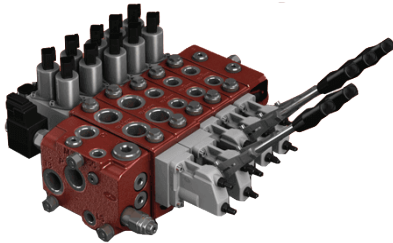


HYDRAULIC GEAR PUMPS 0-1-2-3 GROUP

- High efficiency
- European standard, German standard, SAE flange, etc.
- Aluminium and cast iron flanges
- Multi-pump
- Long life

GROUP	DISPLACEMENT (CM ³ /N)	MAX. CONTINUOUS PRESSURE (MPA)	MAX. SPEED (N/MIN)
0	0,16 ÷ 2,28	22	9.000
1	0,89 ÷ 9,78	24	6.000
2	4,00 ÷ 31,50	25	4.000
3	19,30 ÷ 77,20	25	3.500

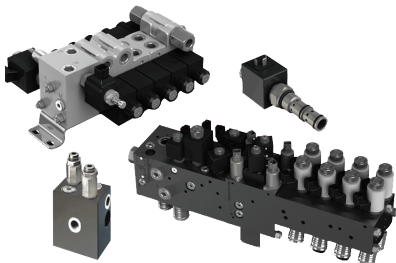
DIRECTIONAL VALVES, REMOTE CONTROLS AND COMPACT HYDRAULICS



DIRECTIONAL VALVES AND REMOTE CONTROLS

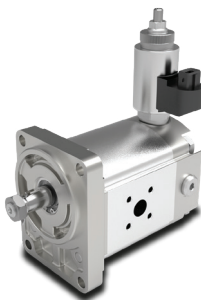
- Specifically used in applications such as: agriculture, construction and earthmoving, lifting and transport, industrial vehicles:
- Monoblock valves
- Sectional valves
- Valves for special applications
- Pressure pre-compensated Load-Sensing and Flow Sharing valves
- Hydraulic remote controls and Feed units
- Pneumatic remote controls
- Flexible cable remote controls
- Pressure: 250 ÷ 420 bar

COMPACT HYDRAULICS



- SAE cavity cartridges valves:
- Hydraulic Valves (Parts in Body):
- Bankable solenoid valves:
- Diverter valves:
- Hydraulic Integrated Circuits (HICs)

FAN DRIVE SYSTEM IN OPEN LOOP SYSTEM WALVOIL FAN DRIVE SYSTEM



These types of motors are widely used in modern Hydraulics due to their performance, long life service and low maintenance costs. An electrohydraulics Fan Drive offers significant advantages if compared with traditional solutions with electric or belt drives.

PUMPS FOR OPEN LOOP SYSTEM



AR SERIES



- Easy to assemble
- Compact and minimum weight design
- Special alloy material, power saving, low noise, long life
- Available for motor connection directly

MODEL	DISPLACEMENT (CM ₃ /N)	MAX. PRESSURE (MPA)	MAX. SPEED (N/MIN)
AR Series	15,8 ÷ 22,2	21	1.800

V SERIES



- New design for changeable angle of swash plate, wide applications
- Special design, low noise level during full pressure time
- Modular control, easy to design system
- Low power consuming, low oil temperature rising

MODEL	DISPLACEMENT (CM ₃ /N)	MAX. PRESSURE (MPA)	MAX. SPEED (N/MIN)
V Series	15,0 ÷ 69,7	25	1.800

PA10VSO SERIES



- New design for changeable angle of swash plate, wide applications
- Special design, low noise level during full pressure time
- Modular control, easy to design system

MODEL	DISPLACEMENT (CM ₃ /N)	MAX. PRESSURE (MPA)	MAX. SPEED (N/MIN)
PA10VSO Series	18 ÷ 45	35	3.900

GEARBOXES FOR MOBILE APPLICATIONS



300 SERIES – MULTIPURPOSE PLANETARY GEARBOXES



TORQUE RANGE (Nm)	GEAR RATIOS (kW)	TRANSMISSIBLE MECHANICAL POWER (kW)
1,000 - 1,100,000	3.4 - 5,000	up to 1,050

500 SERIES -TRUCK MIXER DRIVES GEARBOXES



TORQUE RANGE (Nm)	GEAR RATIOS (kW)	APPLICABLE MOTORS
3,000 - 75,000	17 - 161	Axial piston motors to SAE Standard orbit motors

600 SERIES – TRUCK DRIVE GEARBOXES



TORQUE RANGE (Nm)	GEAR RATIOS (kW)	TRANSMISSIBLE MECHANICAL POWER (kW)
3,000 - 85,000	4.3 - 153	up to 4,000

HYDRAULIC ROTARY ACTUATORS



DA-H SERIES

- Rotating shaft
- Working pressure up to 25 MPa
- Torque up to 250.000 Nm (15 sizes)
- Standard angle 90°, 180°, 270°, 360°
- Special angle up to 1500°

Preferred applications:

Industry (construction machinery, machine tools etc.)



DA-H-AL SERIES

- Rotating shaft
- Working pressure up to 21 MPa
- Torque up to 16.000 Nm
- Standard angle 90°, 180°, 270°, 360°
- Special angle up to 1500°
- Reduced weight (aluminium)

Preferred applications: Aerial platforms

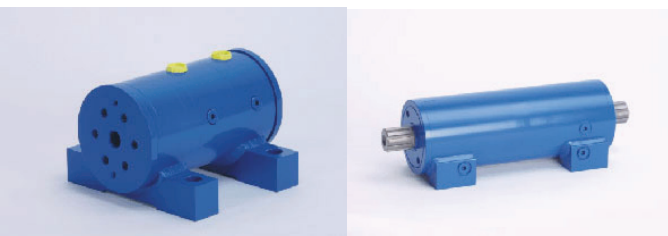


M-DA-H SERIES

- Rotating flange
- Working pressure up to 25 MPa
- Torque up to 4.800 Nm (11 sizes)
- Standard angle 180°, 360°

Preferred applications:

Working platform, construction machinery, automotive technology

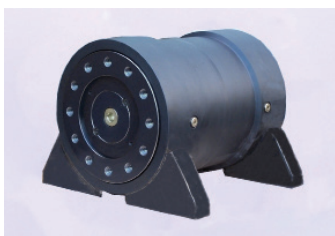


M-DA-H-F SERIES

- Rotating flange or shaft, with foot
- Working pressure up to 21 MPa
- Torque up to 50.000 Nm
- Standard angle 180°, 360°

Preferred applications:

Working platform, Garbage trucks, Automotive technology, etc.



M-DA-H-F3 SERIES

- Rotating flange, special mounting
- Working pressure up to 21 MPa
- Torque up to 5.000 Nm
- Standard angle 180°, 360°

Preferred applications: Working platform



BV SERIES

- Rotating flange, with foot
- Working pressure up to 10 MPa
- Torque up to 100.000 Nm (9 sizes)
- Standard angle 100°, 140°

Preferred applications:

Bucket and ancillary equipment for construction machinery

APPLICATIONS & SECTORS

AGRICULTURE & FORESTRY



Fruit Harvesters



Multipurpose Tractors



Forestry Forwarders



Harvesting Machines

ENVIRONMENT & GARDENING



Mowers (self propelled)



Mowers (remote controlled)



Sweepers



Amphibious Vehicles

CONSTRUCTION & HANDLING



Mini Loaders



Road & Soil Compactors



Mini Dumpers



Skid Steer Loaders

LIFTING



Manlifts



Forklifts



Telehandlers



Aerial platforms



HANSA-TMP

YOUR PARTNER IN HYDRAULICS!



www.hansatmp.com

ITALY - Hansa-Tmp Headquarters

Via M. L. King, 6 41122 Modena
+39 059 415711
hansatmp@hansatmp.it

GERMANY - Sales Office

Dünner Strasse 247-249, 41066
Mönchengladbach
+49 1621392182
michael.wolf@hansatmp.de

CHINA - Sales Office

Room 8921, Building 18, No. 5555, Shenzhuan
Road, Songjiang
District, Shanghai Zip 201601 Shanghai P.R.C.
+86 21 60709280
weiqijin@hansa-tmp.cn

ITALY - Warehouse & Logistics

Via Don Milani 10 41122 Modena
+39 059 415711
hansatmp@hansatmp.it

INDIA - Sales Office

Koncord, Unit No. 302, 3rd Floor, Bund
Garden Road, Pune,
Maharashtra – 411001
+91 98608 01443
vallabh.joshi@hansatmp.in

Certified Company
ISO 9001:2015 – ISO 14001:2015

