



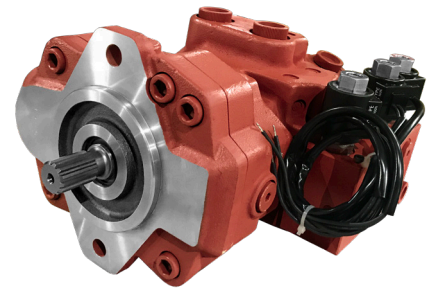
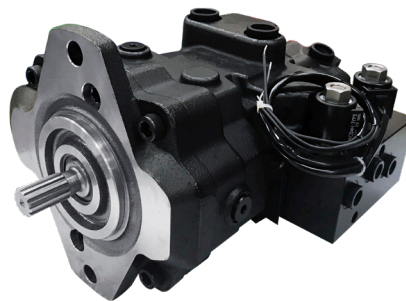
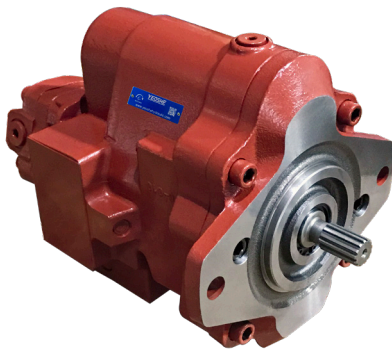
distribues the new

# PISTON PUMP for OPEN LOOP SYSTEM E-PSVD2 Series

manufactured by



for excavators 2.5-6 Ton



**E-PSVD** series pumps are developed most suitably for 2~5ton mini excavators.

This E-PSVD pump consist of 4 elements:

2 piston pumps,

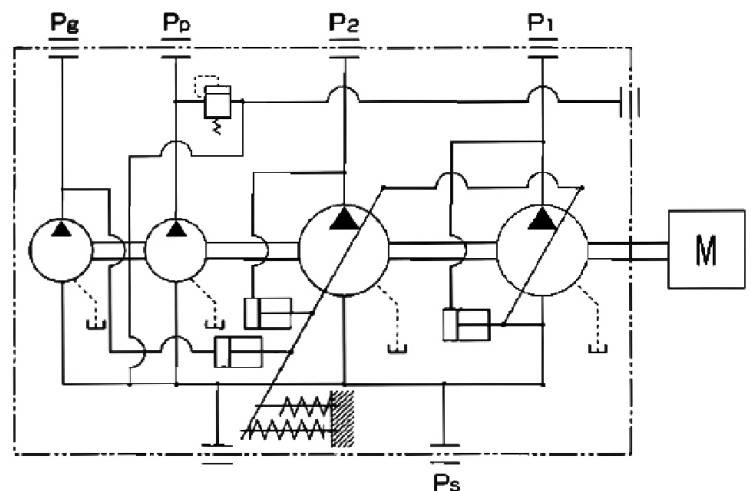
1 gear pump,

1 gerotor pump.

In this series, 4 different size pumps are available.

## Features

- Light weight, simple structure and reduced number of parts.
  - Low noise and low pressure ripple by excellent , Swash Plate and Valve Plate design.
  - Short total length ensure the pump fit small engine room.
  - One common suction port is divided into 4 pump suction area in the case.
  - No case drain port
  - Long life
1. Pilot pump and relief valve (30-50 bar) are installed as standard.
  2. Selection of gear pump displacement is option.



# TECHNICAL DATA

17E

21E

27E

Model	Displacement (MI/r)	Rated pressure (bar)	Maximum torque (N.m)	Splined Shaft (T)	Weight (Kg)	Excavator (Ton)
E-PSVD2-17E-17-0000	17x2	250	85.3	13	23	2.5-3.5
E-PSVD2-17E-17-0055						
E-PSVD2-17E-12-0056						
E-PSVD2-17E-17-0056						
E-PSVD2-21E-17-0000	21x2	250	122.6	13	26	3.5-4.5
E-PSVD2-17E-17-0056						
E-PSVD2-27E-17-0000	27x2	250	140.2	13	36	4.5-6.0
E-PSVD2-27E-12-0055						
E-PSVD2-27E-17-0057						

**Available control option:**

- without solenoid
- with two solenoid valve
- with three solenoid valve

**Perfect for CONSTRUCTION MACHINERY like MINI EXCAVATOR**



**For more information contact our Sales Team at:  
[hansatmp@hanstmp.it](mailto:hansatmp@hanstmp.it)**