

Glycerine Filled Control Pressure Gauges



CONTENTS

Glycerine Filled Control Pressure Gauges

PAGE	2 - 3	Diameter 50 mm
	4 - 5	Diameter 63 mm
	6 - 7	Diameter 100 mm

GLYCERINE-FILLED PRESSURE GAUGES STAINLESS STEEL CASE

DIAMETER 50

Case and rim: AISI 304 stainless steel. Fully sealed. Vibration, shock and corrosion-proof.

Glass: shatterproof methacrylate.

Fluid fill: bidistilled glycerine for damping vibrations, pressure ripple and hammering.

Fitting: brass.

Standard thread: 1/8" G (BSP) - 1/8" GC (BSPT) - 1/8" NPT - 1/4" G (BSP) - 1/4" GC (BSPT) - 1/4" NPT. Different threads on request.

Pressure-sensitive component: copper alloy C-shaped Bourdon spring for pressures up to 40 bars; phosphor bronze spiral from 60 bars upwards.

Mechanism: high-sensitivity made of timepiece brass.

Solder joints: tin alloy up to 40 bars; silver alloy from 60 bars upwards.

Dial: screen-printed on stove-enamelled aluminium. Special screen-printing on request.

Accuracy: class 1,6 - 2,5.

STANDARD SCALES: -1/0 - 0/1 - 0/1.6 - 0/2.5 - 0/4 - 0/6 - 0/10 - 0/16 - 0/25 - 0/40 - 0/60 - 0/100 - 0/160 - 0/250 - 0/400. Other scales on request.



MG 50 RA DIAMETER 50 RADIAL INLET 1/4" (Bar-Psi)

Cod. 914 900 00	Vacuum -76 cm.Hg.
Cod. 914 900 01	Scale 1 bar
Cod. 914 900 02	Scale 1,6 bar
Cod. 914 900 04	Scale 2,5 bar
Cod. 914 900 08	Scale 4 bar
Cod. 914 900 10	Scale 6 bar
Cod. 914 900 20	Scale 10 bar
Cod. 914 900 21	Scale 12 bar
Cod. 914 900 30	Scale 16 bar
Cod. 914 900 40	Scale 25 bar
Cod. 914 900 50	Scale 40 bar
Cod. 914 900 60	Scale 60 bar
Cod. 914 900 70	Scale 100 bar
Cod. 914 900 80	Scale 160 bar
Cod. 914 900 90	Scale 250 bar
Cod. 914 901 00	Scale 400 bar

MG 50 PA DIAMETER 50 REAR INLET 1/4" (Bar-Psi)

Cod. 914 950 00	Vacuum -76 cm.Hg.
Cod. 914 950 01	Scale 1 bar
Cod. 914 950 02	Scale 1,6 bar
Cod. 914 950 04	Scale 2,5 bar
Cod. 914 950 08	Scale 4 bar
Cod. 914 950 10	Scale 6 bar
Cod. 914 950 20	Scale 10 bar
Cod. 914 950 21	Scale 12 bar
Cod. 914 950 30	Scale 16 bar
Cod. 914 950 40	Scale 25 bar
Cod. 914 950 50	Scale 40 bar
Cod. 914 950 60	Scale 60 bar
Cod. 914 950 70	Scale 100 bar
Cod. 914 950 80	Scale 160 bar
Cod. 914 950 90	Scale 250 bar
Cod. 914 951 00	Scale 400 bar

GLYCERINE-FILLED PRESSURE GAUGES STAINLESS STEEL CASE

DIAMETER 63

Case and rim: AISI 304 stainless steel. Fully sealed. Vibration, shock and corrosion-proof.

Glass: shatterproof methacrylate.

Fluid fill: bidistilled glycerine for damping vibrations, pressure ripple and hammering.

Fitting: brass.

Standard thread: 1/8" G (BSP) - 1/8" GC (BSPT) - 1/8" NPT - 1/4" G (BSP) - 1/4" GC (BSPT) - 1/4" NPT. Different threads on request.

Pressure-sensitive component: copper alloy C-shaped Bourdon spring for pressures up to 40 bars; phosphor bronze spiral from 60 bars upwards.

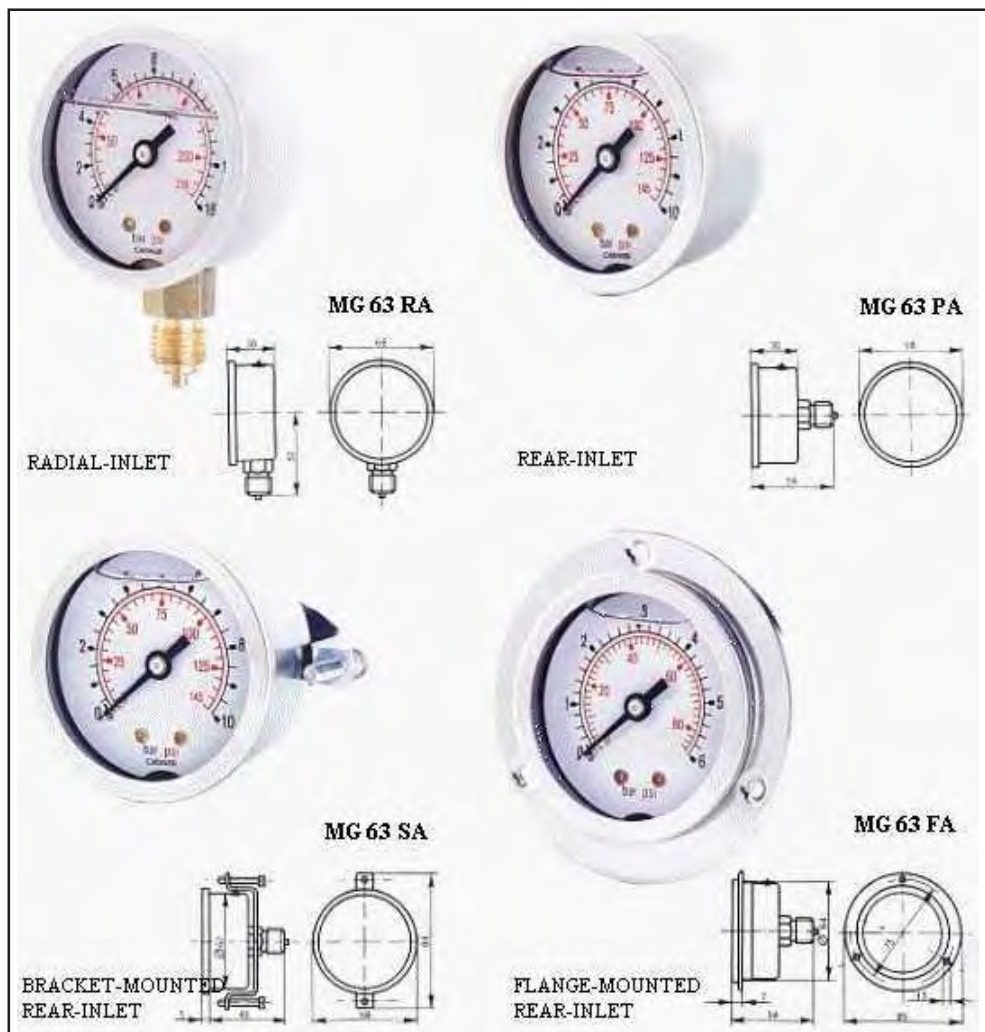
Mechanism: high-sensitivity made of timepiece brass.

Solder joints: tin alloy up to 40 bars; silver alloy from 60 bars upwards.

Dial: screen-printed on stove-enamelled aluminium. Special screen-printing on request.

Accuracy: class 1,6 - 2,5.

STANDARD SCALES: -1/0 - 0/1 - 0/1.6 - 0/2.5 - 0/4 - 0/6 - 0/10 - 0/16 - 0/25 - 0/40 - 0/60 - 0/100 - 0/160 - 0/250 - 0/400 - 0/600. Other scales on request.



MG 63 RA DIAMETER 63 RADIAL INLET 1/4" (Bar-Psi)

Cod. 914 919 90	Scale -1+3 bar	Cod. 914 920 30	Scale 16 bar
Cod. 914 920 00	Vacuum -76 cm.Hg.	Cod. 914 920 40	Scale 25 bar
Cod. 914 920 01	Scale 1 bar	Cod. 914 920 50	Scale 40 bar
Cod. 914 920 02	Scale 1,6 bar	Cod. 914 920 60	Scale 60 bar
Cod. 914 920 04	Scale 2,5 bar	Cod. 914 920 70	Scale 100 bar
Cod. 914 920 08	Scale 4 bar	Cod. 914 920 80	Scale 160 bar
Cod. 914 920 10	Scale 6 bar	Cod. 914 920 90	Scale 250 bar
Cod. 914 920 20	Scale 10 bar	Cod. 914 921 00	Scale 400 bar
Cod. 914 920 21	Scale 12 bar	Cod. 914 921 10	Scale 600 bar

MG 63 PA DIAMETER 63 REAR INLET 1/4" (Bar-Psi)

Cod. 914 919 90	Scale -1+3 bar	Cod. 914 920 30	Scale 16 bar
Cod. 914 920 00	Vacuum -76 cm.Hg.	Cod. 914 920 40	Scale 25 bar
Cod. 914 920 01	Scale 1 bar	Cod. 914 920 50	Scale 40 bar
Cod. 914 920 02	Scale 1,6 bar	Cod. 914 920 60	Scale 60 bar
Cod. 914 920 04	Scale 2,5 bar	Cod. 914 920 70	Scale 100 bar
Cod. 914 920 08	Scale 4 bar	Cod. 914 920 80	Scale 160 bar
Cod. 914 920 10	Scale 6 bar	Cod. 914 920 90	Scale 250 bar
Cod. 914 920 20	Scale 10 bar	Cod. 914 921 00	Scale 400 bar
Cod. 914 920 21	Scale 12 bar	Cod. 914 921 10	Scale 600 ba

GLYCERINE-FILLED PRESSURE GAUGES STAINLESS STEEL CASE

DIAMETER 100

Case and rim: AISI 304 stainless steel. Fully sealed. Vibration, shock and corrosion-proof.

Glass: shatterproof methacrylate.

Fluid fill: bidistilled glycerine for damping vibrations, pressure ripple and hammering.

Fitting: brass.

Standard thread: 1/4" G (BSP) - 1/4" GC (BSPT) - 1/4" NPT - 3/8" G (BSP) - 3/8" GC (BSPT) - 3/8" NPT - 1/2" G (BSP) - 1/2" GC (BSPT) - 1/2" NPT. Different threads on request.

Pressure-sensitive component: copper alloy C-shaped Bourdon spring for pressures up to 40 bars; phosphor bronze spiral from 60 bars upwards.

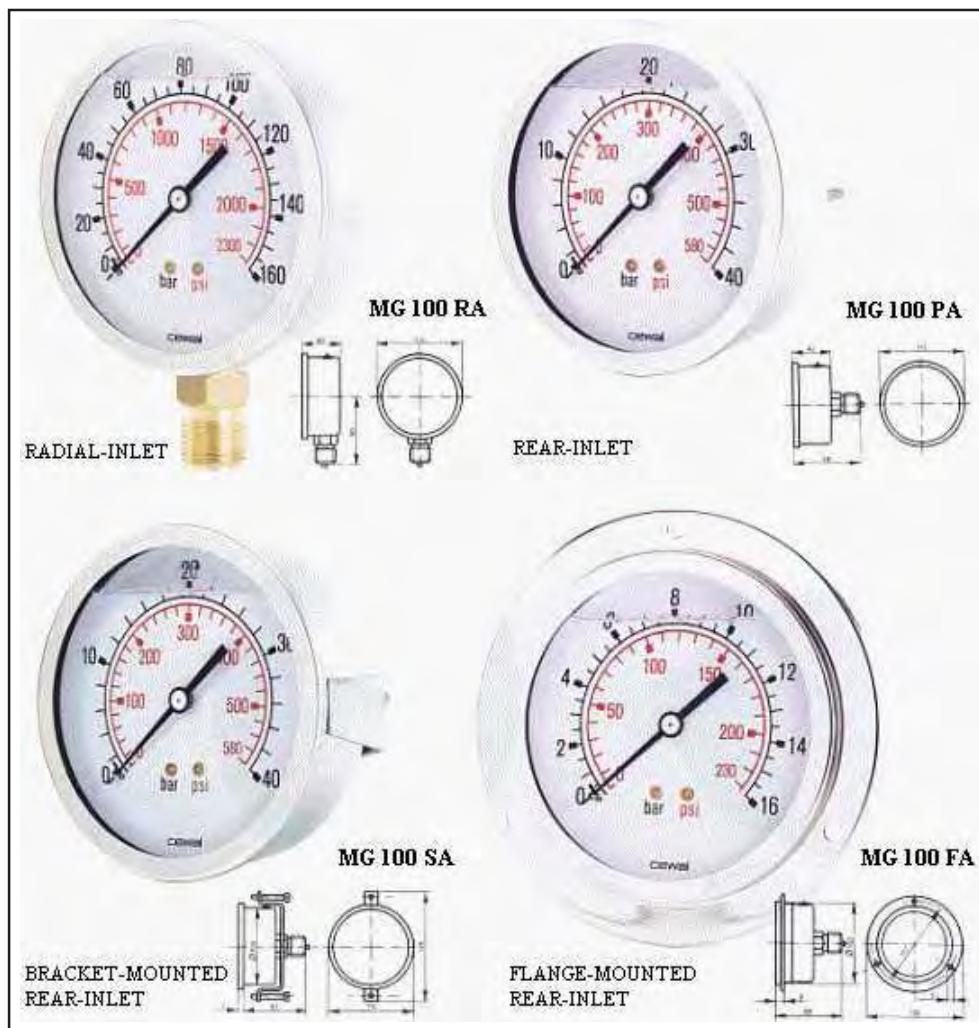
Mechanism: high-sensitivity made of timepiece brass.

Solder joints: tin alloy up to 40 bars; silver alloy from 60 bars upwards.

Dial: screen-printed on stove-enamelled aluminium. Special screen-printing on request.

Accuracy: class 1,6 - 2,5.

STANDARD SCALES: -1/0 - 0/1 - 0/1.6 - 0/2.5 - 0/4 - 0/6 - 0/10 - 0/16 - 0/25 - 0/40 - 0/60 - 0/100 - 0/160 - 0/250 - 0/400 - 0/600. Other scales on request.



MG 100 RA DIAMETER 100 RADIAL INLET 1/2" (Bar-Psi) Accuracy class 1,6

Cod. 914 929 90	Scale -1+3 bar	Cod. 914 930 40	Scale 25 bar
Cod. 914 930 00	Vacuum -76 cm.Hg.	Cod. 914 930 50	Scale 40 bar
Cod. 914 930 01	Scale 1 bar	Cod. 914 930 60	Scale 60 bar
Cod. 914 930 02	Scale 1,6 bar	Cod. 914 930 70	Scale 100 bar
Cod. 914 930 04	Scale 2,5 bar	Cod. 914 930 80	Scale 160 bar
Cod. 914 930 08	Scale 4 bar	Cod. 914 930 90	Scale 250 bar
Cod. 914 930 10	Scale 6 bar	Cod. 914 931 00	Scale 400 bar
Cod. 914 930 20	Scale 10 bar	Cod. 914 931 10	Scale 600 bar
Cod. 914 930 30	Scale 16 bar	Cod. 914 931 30	Scale 1000 bar

MG 100 PA DIAMETER 100 REAR INLET 1/2" (Bar-Psi)

Cod. 914 990 02	Vacuum -76 cm.Hg.	Cod. 914 990 50	Scale 40 bar
Cod. 914 990 03	Scale 1 bar	Cod. 914 990 60	Scale 60 bar
Cod. 914 990 04	Scale 1,6 bar	Cod. 914 990 70	Scale 100 bar
Cod. 914 990 05	Scale 2,5 bar	Cod. 914 990 80	Scale 160 bar
Cod. 914 990 08	Scale 4 bar	Cod. 914 990 90	Scale 250 bar
Cod. 914 990 10	Scale 6 bar	Cod. 914 991 00	Scale 400 bar
Cod. 914 990 20	Scale 10 bar	Cod. 914 991 10	Scale 600 bar
Cod. 914 990 30	Scale 16 bar	Cod. 914 991 30	Scale 1000 bar
Cod. 914 990 40	Scale 25 bar		

As HANSA-TMP has a very extensive range of products and some products have a variety of applications, the information supplied may often only apply to specific situations. If the catalogue does not supply all the information required, please contact HANSA-TMP. In order to provide a comprehensive reply to queries we may require specific data regarding the proposed application.

Whilst every reasonable endeavour has been made to ensure accuracy, this publication cannot be considered to represent part of any contract, whether expressed or implied. HANSA-TMP reserves the right to amend specifications at their discretion.

Poichè HANSA-TMP offre una gamma di prodotti molto estesa ed alcuni di questi vengono impiegati per più tipi di applicazioni, le informazioni riportate possono riferirsi solo a determinate situazioni. Se nel catalogo non sono riportati tutti i dati necessari, si prega di contattare HANSA-TMP. Al fine di poter fornire una risposta esauriente potrà rendersi necessaria la richiesta di dati specifici riguardanti l'applicazione in questione.

Questo catalogo, pur essendo stato approntato con particolare riguardo alla precisione dei dati riportati, non consiste parte di alcun contratto espresso o implicito. HANSA-TMP si riserva il diritto di apportare qualsiasi modifica ai dati riportati.

HANSA · TMP srl

Via M.L. King, 6 - **41122 MODENA (ITALY)**

Tel: 0039-(0)59 - 41.57.11

Fax: 0039-(0)59 - 41.57.29 / 41.57.30

INTERNET: <http://www.hansatmp.it>

E-MAIL: hansatmp@hansatmp.it